



***“TekWorks is an amazing partner!”***

**Karen Eddy**

Real Estate Property Specialist III

**Karen Eddy**  
Real Estate Property Specialist III

3355 Michelson, Suite 100  
Irvine, CA 92612  
Tel: (949) 672-7714  
Fax: (949) 672-5409  
[karen.eddy@wdc.com](mailto:karen.eddy@wdc.com)

**PROJECT HIGHLIGHTS**

**Data Center**

- 144 Strands of OM3 fiber Sumitomo Air Blown fiber
- 96 Cat 6 copper ports connecting back to the MDF
- Approximately 40 APC Server Cabinets

**IDF**

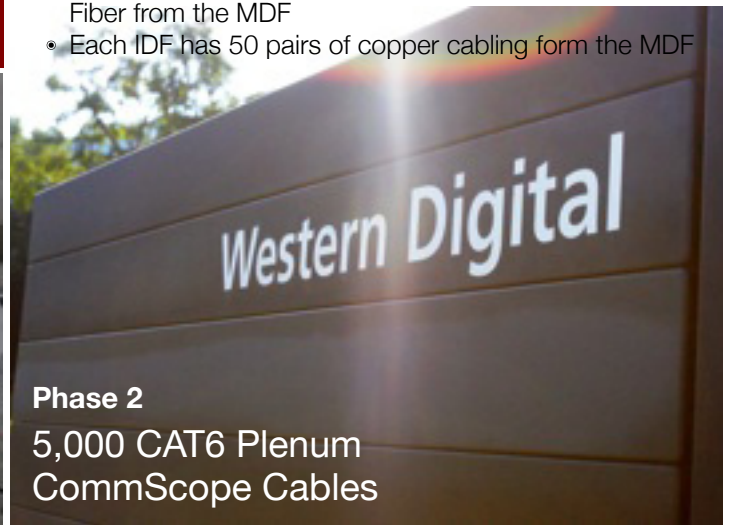
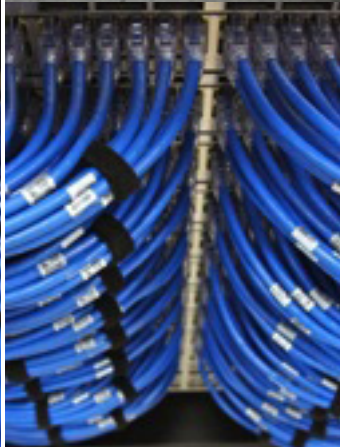
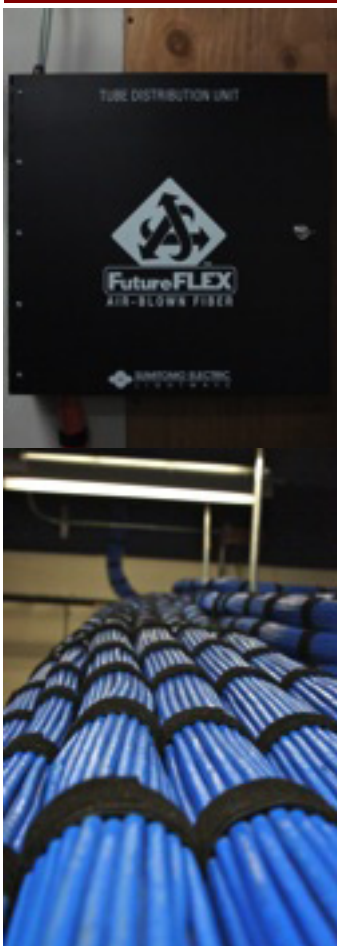
- 9 Intermediate Closets, Main Distribution Frame and a 5,000 sq. ft. Data center

**Number of Station Cables**

- Each IDF has an average of 2000 cables for a grand total of approximately 18,000 station cables

**Copper and Fiber Risers**

- Each IDF has 24 strands of OM3 Sumitomo Air Blown Fiber from the MDF
- Each IDF has 50 pairs of copper cabling form the MDF



**Phase 2**

**5,000 CAT6 Plenum  
CommScope Cables**

